



NEWSLETTER

1st Quarter, 2019

TMA TECH TIPS

TMA TRAINING

TMA EVENT SCHEDULE

MEET THE CREW



TMA News

As we count down to UC19, we are preparing for our new product launch with "Project Refresh" and moving into our new corporate headquarters - there is a lot happening at TMA.

The User Conference will be held April 9th - 11th at the Hyatt Regency Hotel in Downtown Tulsa. The event offers a variety of opportunities to network, collaborate, and exchange ideas with TMA staff and other TMA users. Most importantly, attend informative sessions, hands-on workshops, and roundtable discussions that will bring your knowledge of TMA products to a new level.

Although we are just two months away, there is still time to get the Early Bird Conference Rate. Sign up before February 28, 2019 and get \$100 off your Conference fee. To learn more about the event and topics covered or to register for UC19, please click [TMA User Conference Website](#), contact us directly at UC2019@tmasystems.com, or call 800.862.1130.

Sign Up for UC19 Workshops in March!

TMA Systems Workshops are popular! Due to limited seating, pre-registration is required. The online registration period for the TMA User Conference (UC19) Workshops will begin Tuesday, March 19th at 12:00 PM (Central Standard Time) and will conclude on



WORKSHOP



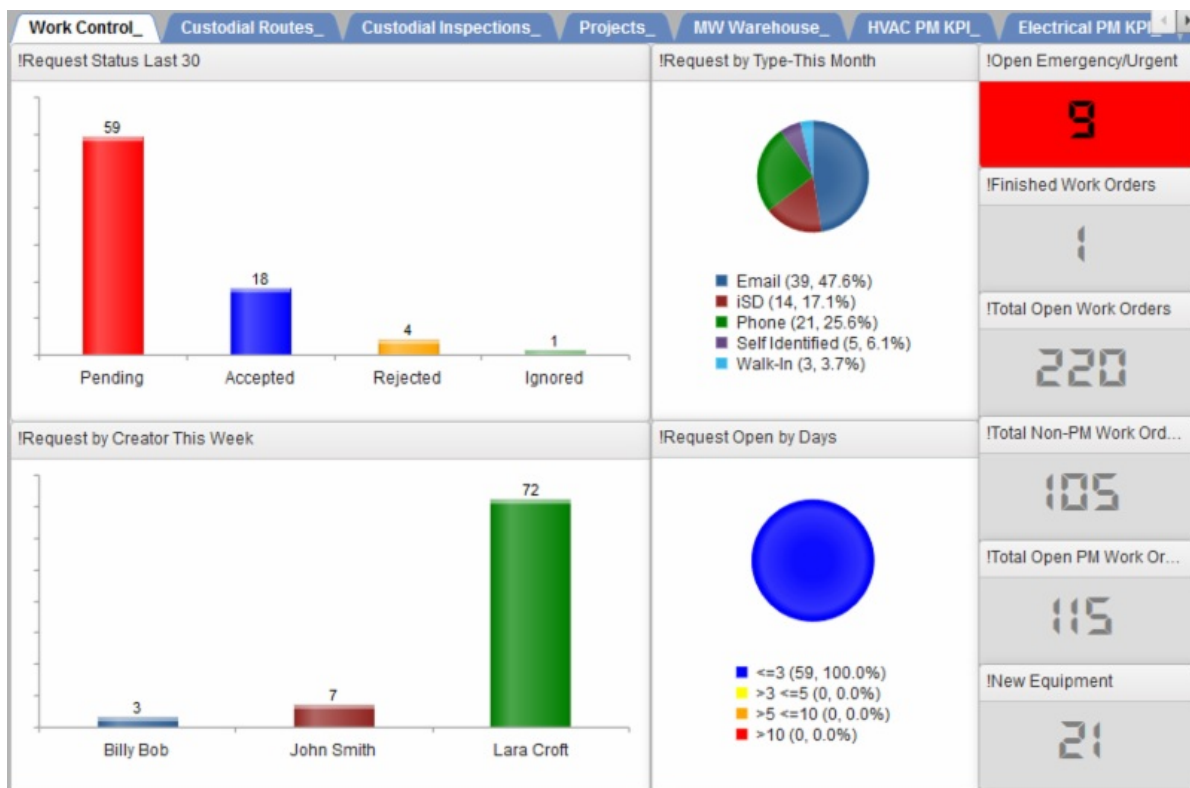
Friday, March, 29th at 3:00 PM (Central Standard Time). Watch your email for the link to the UC19 Workshops Registration Form.

We look forward to seeing you for this year's event. Remember to follow UC19 on Twitter at **#TMAUC19**.

Product Spotlight

New Role-based Dashboards

New pre-defined, role-based dashboards are now available for WebTMA clients who have licensed the Executive Dashboard module. These dashboards offer greater flexibility and improved performance by taking advantage of recent enhancements such as dynamic custom SQL. Most importantly, these Dashboards were built with the input and knowledge of TMA's Professional Services staff and provide improved, role-based work flows and robust key performance indicators (KPI's).



The type of data that is captured in the new pre-defined dashboards and dashboard controls include, but is not limited to, the following:

- Work Control: Request Status (Graph), Requests by Type (Pie), Requests Aging (Pie), Requests by Creator this Week (Graph), Open Emergency/Urgent WOs (Digital), Finished Work Orders (Digital), Total Open Work Orders (Digital), Total Non-PM Work Orders (Digital), Total Open PM Work Orders (Digital)
- Preventive Maintenance Management: Open PMs (Digital), Closed PMs this Week (Digital), Closed PMs this Month (Digital), Unscheduled PMs (Digital), Open PMs Aging (Pie), Created versus Closed PMs - Annual (Pie), Open PMs by Facility (Graph), Open PMs by Trade (Graph)
- Trade Specific WO Management: Total Open (Digital), Unscheduled WOs (Digital), Open Non-PM

Work Orders (Digital), Work Order by Due Date (Graph), Closed This Week (Digital), Finished WOs (Digital), Emergency WOs (Digital), Closed This Month (Digital), Open Scheduled/Projects (Digital), Missing Failure Codes (Digital), Mobile Created (Digital), Unposted Charges (Digital), Charges Last Month (Digital), Open Corrective by Priority (Pie), Open Service Request by Priority (Pie), Open Work Orders by Type (Pie), Aging Work Orders by Days (Pie)

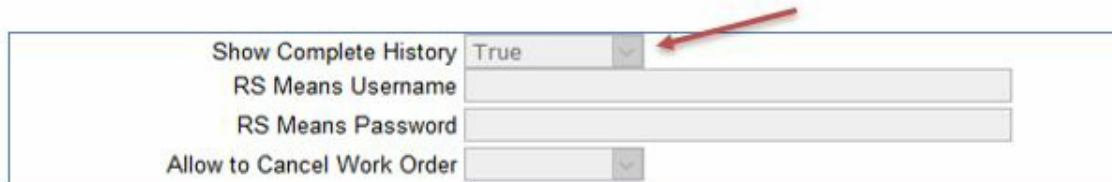
If you are interested in learning more about the Executive Dashboard module or are currently licensed for the Executive Dashboard module and would like to discuss the process and services associated with deploying the new pre-defined dashboards with your data, please contact sales@tmasystems.com.

TMA Tech Tips

User Preference - Show Complete History

A Preference was added to the User record in WebTMA version 5.1.18 that allows the user to review the entire work history for an item from the Work Orders Tab. To activate this feature, mark this Preference as True to allow a user to see the history of all work orders regardless of the user's data access.

The history is visible from the common Work Orders Tab found on many windows. Users can click the Work Order number to see the Work Order Quick View popup window, and review all work done for a particular item.



The screenshot shows a form with four rows of preferences. The first row is 'Show Complete History' with a dropdown menu set to 'True'. A red arrow points to the dropdown arrow. The second row is 'RS Means Username' with a text input field. The third row is 'RS Means Password' with a text input field. The fourth row is 'Allow to Cancel Work Order' with a dropdown menu.

Path: Admin > User Management > Records / Preferences Tab

TMA Training

Configuring Work Order Browse

There are multiple methods for showing data in WebTMA, and the WO Browse is one of the quickest and most efficient ways to query data. In previous versions of WebTMA, you were not able to configure the columns in WO Browse, but that can now be easily done to trim down the columns to show exactly the data you need. This video will walk you through some of the basics of work order browse, with a focus on configuring the results to show targeted data. This allows you to be more efficient and show only the data you need to show or report.

Custodial Templates in WebTMA

The Custodial Template window within the WebTMA Custodial Management module provides an easy and efficient way for you to set up your custodial program in WebTMA. This video will show you the purpose of Custodial Templates, and break down in simple terms each component of the template including tasks, frequencies, base times, projects, and inspection

items. This knowledge will allow you to quickly set up your custodial program and move on to the next step of your implementation.

Receiving's in WebTMA

Use the Receiving's window to record delivery of materials that have been purchased using the Purchase Order window in WebTMA. This video covers this important function of Materials Management and will introduce the basics of receiving, distribution, unreceiving, and associated options.

To access the new training videos go to the [TMA Customer Portal](#).

TMA Software Releases Available

All current versions are available on the TMA Support site. Contact TMA Client Support at 800.228.8765, or via e-mail at support@tmasystems.com, for assistance or questions.

WebTMA Updates:

WebTMA Client Hosted Updates

Release Version 5.1.39 (Current Release)

WebTMA Handheld Device Updates

(The following are paired with the current release of WebTMA shown above)

WebTMA GO: Release Version 2.1.28 (Current App Store Release)

mobileTMA GO: Release Version 1.3.28 (Current App Store Release)

TMA Desktop Updates:

Client Server Maintenance Releases

Release Version 8.1.2.16 (Current Release)

Non-Client Server Maintenance Release

Release Version 7.7.16 for non-client server

Please Note:

We had another release of mobileTMA GO and WebTMA GO for issues encountered with clients who cannot upgrade their devices beyond iOS 9. The updates: mobileTMA GO (v.1.3.28) and WebTMA GO (v2.1.28) are in the Apple App Store.

Please be aware that after April 30th, 2019 we will no longer be supporting iOS 9. The changes Apple has imbedded in their framework from iOS 9 to iOS 12 have been substantial. The ability to support this older technology is no longer practical. After April 30th, 2019, you will most likely need to upgrade your equipment to allow for the more current iOS version.

What does this mean for you?

The release of mobileTMA GO v1.3.28 and WebTMA GO v2.1.28 will be paired with WebTMA version 5.1.39 and compatible with 5.1.38. If you are on one of these versions, you are already prepared for a seamless update to the new app version.

If you are on a previous WebTMA version older than 5.1.38, ensure auto updates are turned off on all your devices. If you use a Mobile Device Management (MDM)* system, you will need to block the update from your devices. This will prevent the need to upgrade your WebTMA application to become compatible. You won't be able to install the previous mobileTMA GO or WebTMA GO versions. Please note, this can create compatibility issues if you procure new devices or add new mobile users.

*MDM - Mobile Device Management - This is the term used to describe a system where you centrally manage apps, content, and configuration on the enrolled devices. These are third-party systems that work with Apple servers to control devices used as part of an enterprise system.

To contact a TMA Systems team member:

Client Support Team:
Email: support@tmasystems.com
Phone: 800.228.8765

Client Relations Team:
Email: crm@tmasystems.com
Phone: 918.858.6600 (Corporate)

TMA Event Schedule

Trade Show Season 2019



The TMA Systems team supports and sponsors multiple events and conferences that span across the industries we serve. These are events attended by our many users, clients, and customers throughout the world. To see where we will be in 2019 check our website for a complete trade show schedule.

See: [2019 Trade Show Schedule](#)

Meet The Crew

Amanda Hope
Account Executive

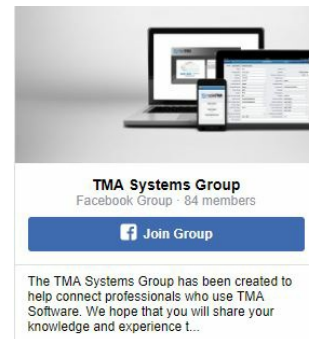
With 12 years of sales experience and a degree from the University of North Dakota, Amanda joins our sales team as an Account Executive and works with healthcare clients on the east coast. Amanda relocated to Tulsa from Minneapolis MN in 2010. When she is not spending her free time with her son (Gabe) and dogs (Penny and Max), she enjoys photography, OU football, and traveling.



Join The Facebook Group Page

Connect with WebTMA Users!

Trouble shoot your department issues....
Learn more about the TMA Systems company culture....
Stay up-to-date with User Conference information....
See job opportunities at TMA Systems....
[Learn More](#)



ABOUT US

To learn more about TMA, please visit www.tmasystems.com.

TMA Systems
5100 E. Skelly Drive, Suite 900
Tulsa, Oklahoma 74135
918.858.6600
800.862.1130



Contact Us

STAY CONNECTED

